



The ISF[®] Process

Surface Engineering Designed for the Automotive and Trucking Industry



How REM's Isotropic Superfinish Process Can Benefit the Automotive Industry:

REM's isotropic superfinishing technologies (the ISF[®] and Rapid ISF[®] Processes) are surface finishing processes that gently remove the surface asperities from metal components that are created during the machining and forming processes. This surface refinement results in a highly planarized, micro-textured surface that is optimal for lubricant retention and increases lambda ratio.

By reducing the friction, increasing the load distribution, and optimizing the surface texture, the ISF[®]-Surface has been shown to increase efficiency, load carrying capacity/power density, and resistance to contact fatigue while also significantly reducing lubricant operating temperature and reducing structure borne-noise. The process has been proven on hypoid gears, fine-pitch transmission gears, double helical gears and the like. It is machine controlled, robust and maintains component geometry.

Before the ISF[®] Process



After the ISF[®] Process

Potential ISF Technology Applications:

- Axle gears
- Trunnions
- Transmission components
- Bearings
- Camshafts
- Crankshafts
- Rocker arms
- Tappets

ISF Automotive Part Performance Benefits:

- Increase fuel efficiency
- Increase load carrying capacity/power density
- Increase surface durability
- Reduce operating temperatures
- Reduce structure-borne noise
- Eliminate component break-in



www.remchem.com

REM QMS is certified to ISO 9001:2015 and AS9100:2016 Rev D

How Does REM's Rapid ISF Process Meet the Industry's High Production Needs?

The need for REM's ISF Process within automotive and trucking industries has never been higher. Consumers and governments are demanding greater fuel efficiency and reduced greenhouse gas emissions. Improved component and power transfer system performance are key value-added benefits for both customers and suppliers.

The batch-style ISF Process and its resultant ISF® Surface offer performance benefits not seen by any other single technology. It is well suited to applications where bulk components or long shaft-like components need to be processed. The near single piece flow Rapid ISF® Process offers all of the benefits for the ISF Process but in a just-in-time production application. It is well suited to all varieties

of gears that demand short processing cycle times and have all of the benefits of the ISF® Surface. The Rapid ISF® Process is well suited to integration in to a fully automated, partially automated, or manual manufacturing operation.

The ISF Process will produce a surface finish of Ra <10 uin (0.25 um) or <4 uin (0.10 um) in approximately 2 hours depending on starting condition and final requirements. The Rapid ISF Process will produce the same finish levels in approximately 4-8 minutes. Both processes are capable of producing lower surface roughness finishes if required.

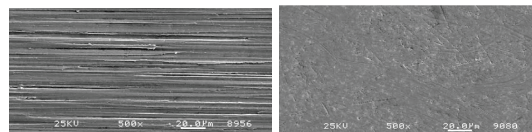


The ISF Process equates to better fuel economy, lower emissions, increased component longevity.

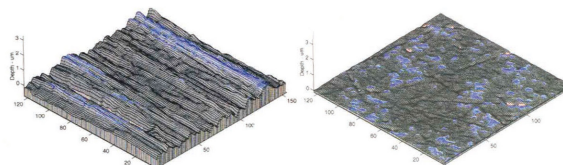
Isotropic Superfinish (ISF®)



Before the ISF® Process



Before and After scanning electron microscope images



Honed Surface

ISF Surface



After the ISF® Process



REM Surface Engineering
325 W Queen Street
Southington, CT 06489 USA
Phone: (860) 621-6755
Fax: (860) 621-8822
Email: sales@remchem.com

REM Surface Engineering
2107 Longwood Drive
Brenham, TX 77833 USA
Phone: (979) 277-9703
Fax: (979) 277-0309
Email: sales@remchem.com

REM Surface Engineering
8912 Mississippi Street
Merrillville, IN 46410 USA
Phone: (860) 736-1477
Email: sales@remchem.com

REM Surface Engineering, GmbH.
Siemensring 68d
D-47877 Willich, DE
Phone: +49 2154 82070-0
Email: sales-eu@remchem.com

www.remchem.com
REM QMS is certified to ISO 9001:2015 and AS9100:2016 Rev D

ISF® and REM logo are registered trademarks of REM Surface Engineering. All rights reserved.